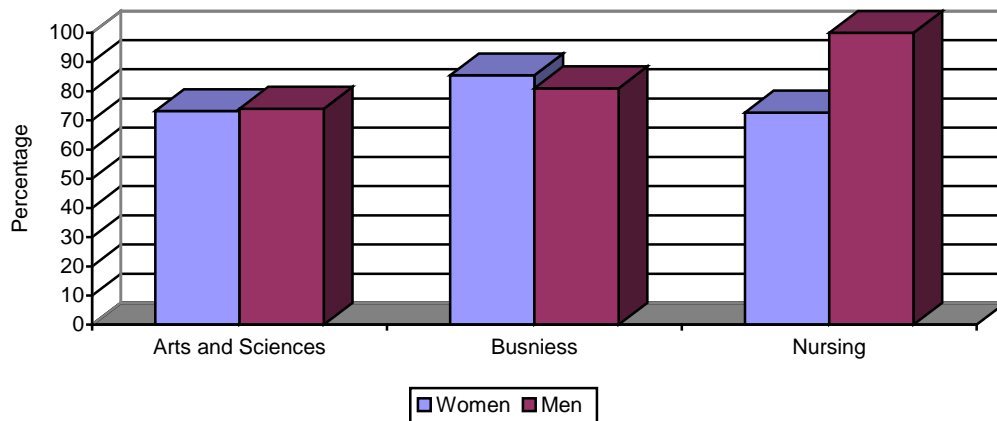


SECTION 4: UNIVERSITY DATA: ATTRITION AND GRADUATION RATES

Table 4.3: 2006 Freshman Graduation Rates by Ethnicity, School and Sex

	Freshmen	No./Percent Graduating in 4 years		No./Percent Graduating in 5 years		No./Percent Graduating in 6 years	
Black, Non-Hispanic	26	14	53.8%	18	69.2%	18	69.2%
American Indian/Alaskan Native	14	6	42.9%	8	57.1%	8	57.1%
Asian/Pacific Islander	94	59	62.8%	69	73.4%	70	72.9%
Hispanic	33	17	51.5%	21	63.6%	23	69.7%
International	6	6	100%	6	100%	6	100%
White, Non-Hispanic	778	542	69.7%	579	74.4%	583	74.9%
Not Reported	10	8	80.0%	8	80.0%	9	90.0%
Combined Total	961*	652	67.8%	709	73.8%	717	74.6%
Arts and Sciences							
Women	466	315	67.6%	337	72.3%	341	73.2%
Men	308	208	67.5%	226	73.4%	228	74.0%
Total Arts and Sciences	774	523	67.6%	563	72.7%	569	73.5%
Business Administration							
Women	48	38	79.2%	40	83.3%	41	85.4%
Men	58	44	75.9%	47	81.0%	47	81.0%
Total Business Administration	106	82	77.4%	87	82.1%	88	83.0%
Nursing							
Women	77	44	57.1%	55	71.4%	56	72.7%
Men	4	3	75.0%	4	100.0%	4	100.0%
Total Nursing	81	47	58.0%	59	72.8%	60	74.1%
Combined Women	591	397	67.2%	432	73.1%	438	74.1%
Combined Men	370	255	68.9%	277	74.9%	279	75.4%
Total	961	652	67.8%	709	73.8%	717	74.6%
Financial Aid Status							
Pell Grant Recipients	151	85	56.3%	99	65.6%	102	67.5%
Perkins, Federal Nursing, Subsidized Stafford (No Pell)	307	200	65.1%	211	68.7%	214	69.7%
No Pell, Perkins, Federal Nursing or Subsidized Stafford	503	367	73.0%	399	79.3%	401	79.7%

2006 Freshman Graduation Rates



*Two students were removed from the original cohort due to death.