



Skutt Student Center



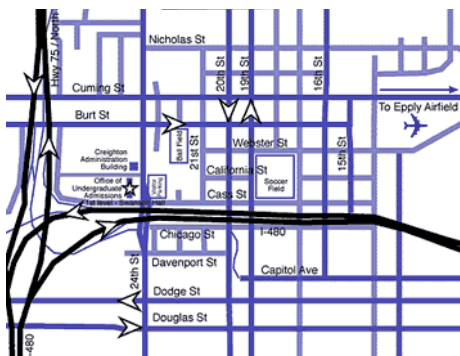
Creighton University
Omaha, Nebraska • Downtown Corridor

V.J. & ANGELA SKUTT STUDENT CENTER FOR PARTIES, BANQUETS AND MEETINGS.

WELCOME!

The Skutt Student Center is at the center of the vibrant Creighton University campus, adjacent to residence and academic halls, the library and the historic St. John's Church and fountain.

It is the campus living room, situated on the landscaped mall that runs throughout the campus.



We welcome the opportunity to host your next conference, meeting, or special event at Creighton University. Situated in the heart of downtown Omaha, Creighton offers easy access to the airport, hotels, restaurants and local entertainment. Limited on-campus housing may be available during non-academic sessions.

FACILITIES & SERVICES

- 8700 square foot ballroom
- 2 meeting rooms and a boardroom
- Smoke-free environment
- Complimentary on-site parking
- Full coverage wireless network
- Lounge spaces with cable television
- Pool table, massaging chairs, and vending area
- Computer lab access



CREIGHTON UNIVERSITY
2500 CALIFORNIA PLAZA
OMAHA, NEBRASKA 68178

PH: 402-280-3545
FAX: 402-280-1708

WWW.CREIGHTON.EDU/SKUTT

DINING & ENTERTAINMENT

- Full service catering
- Wareham Court (food court)
- Jack & Ed's (pizza, coffee and convenience shop)
- Numerous food outlets on campus
- Kiewit Fitness Center

SURROUNDING ATTRACTIONS

The V.J. & Angela Skutt Student Center puts you near:

- Old Market Historic District
- Qwest Center Omaha
- Joslyn Art Museum
- Fontenelle Forest Nature Center
- Omaha's Henry Doorly Zoo
- Lauritzen Gardens
- Rosenblatt Stadium
- Orpheum Theater
- Strategic Air and Space Museum
- 10 minutes from Eppley Airport

CONTACT US TODAY

To get started with your planning, please contact:

Jana Ammon
Campus Conference Coordinator
(402) 280-3545
JanaAmmon@Creighton.edu.

Creighton
UNIVERSITY



MEETING ROOMS 104 & 105

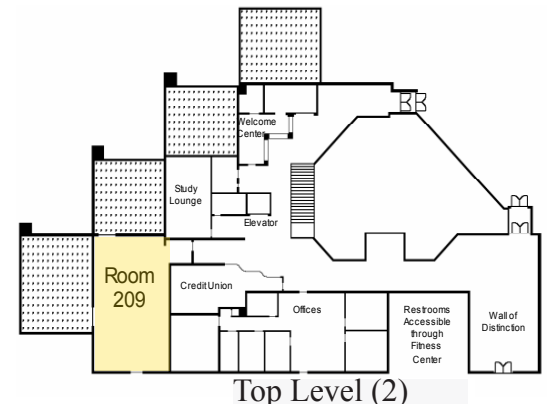
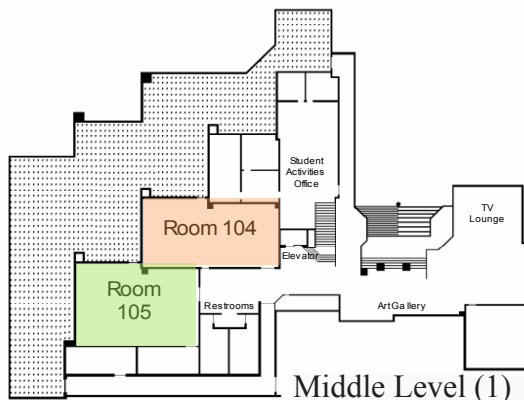
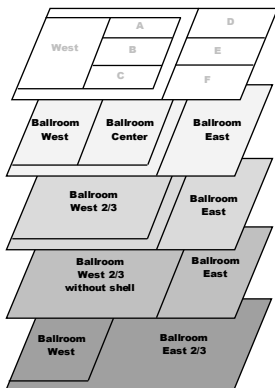
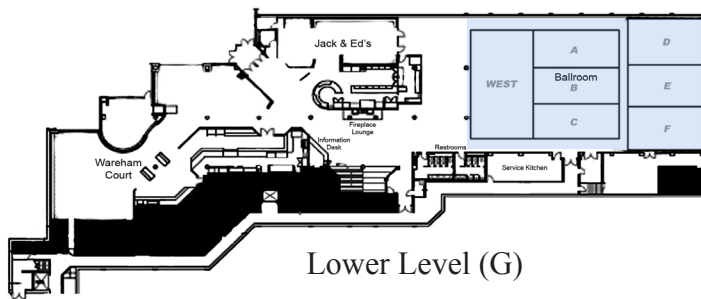
These rooms can be used separately or together for meetings, workshops, conferences, banquets, and small receptions. An outdoor patio located adjacent to these rooms can also be reserved.

BOARDROOM 209

This space provides a comfortable meeting room setting with two separate spaces: a conference area and a “living room style” lounge area. Formal committee meetings, luncheons, interviews, and casual discussion groups can be held comfortably in this room. There are also two private outdoor patios adjacent to the space.

BALLROOM

This large, carpeted, multipurpose space is located on the ground level of the Skutt Student Center. It is equipped with a sound system and a unique lighting system. Adjacent to the ballroom is the fireplace lounge.



ROOM CAPACITIES

Room Name	Audience	Board-room	Class-room	U-Shape	Hollow Square	Conference	Round (Banquet)	Stand-Up Reception
Room 209		12						35-45
Room 104	67	16	35	24	26	36	56	76
Room 105	78	16	40	28	30	42	64	85
Ballroom	700	---	170	---	---	---	400 *	700
West	80	20	36	30	40	30	60	80
Center ABC	120	---	75	---	---	45	90	120
East DEF	147	---	84	---	---	60	120	147
West 2/3 WABC	250	---	84	---	---	75	150	250
East 2/3 ABCDEF	350	---	84	---	---	125	250	350
Section AB	70	20	48	30	34	30	60	70
Section BC	70	20	48	30	34	30	60	70
Section DE	98	20	55	30	40	40	80	98
Section EF	98	20	55	30	40	40	80	98
Section A	35	20	20	21	24	15	30	35
Section B	35	20	20	21	24	15	30	35
Section C	35	20	20	21	24	15	30	35
Section D	56	20	35	26	32	30	60	56
Section E	35	20	20	21	24	15	30	35
Section F	56	20	35	26	32	30	60	56

Maximum room capacity may decrease to accommodate equipment.
 *Ballroom capacity may be extended to 450 at round tables only if **no other equipment** (such as stages, dance floor, buffet lines, and audiovisual) is set.